

Florida KidCare Evaluation of SFY 2008-2009: Descriptive Report Summary

Betsy Shenkman, PhD
June Nogle, PhD

Prepared for the KidCare Coordinating Council
August 3, 2010



Background

- Evaluation for State Fiscal Year 2008-2009
- Results and key findings developed from:
 - Applications and enrollment data
 - Encounter data
 - Telephone surveys with parents of children
 - Newly enrolled - less than 3 months, n=400
 - Established enrollees - 12 months or longer, n=1,485





Populations studied

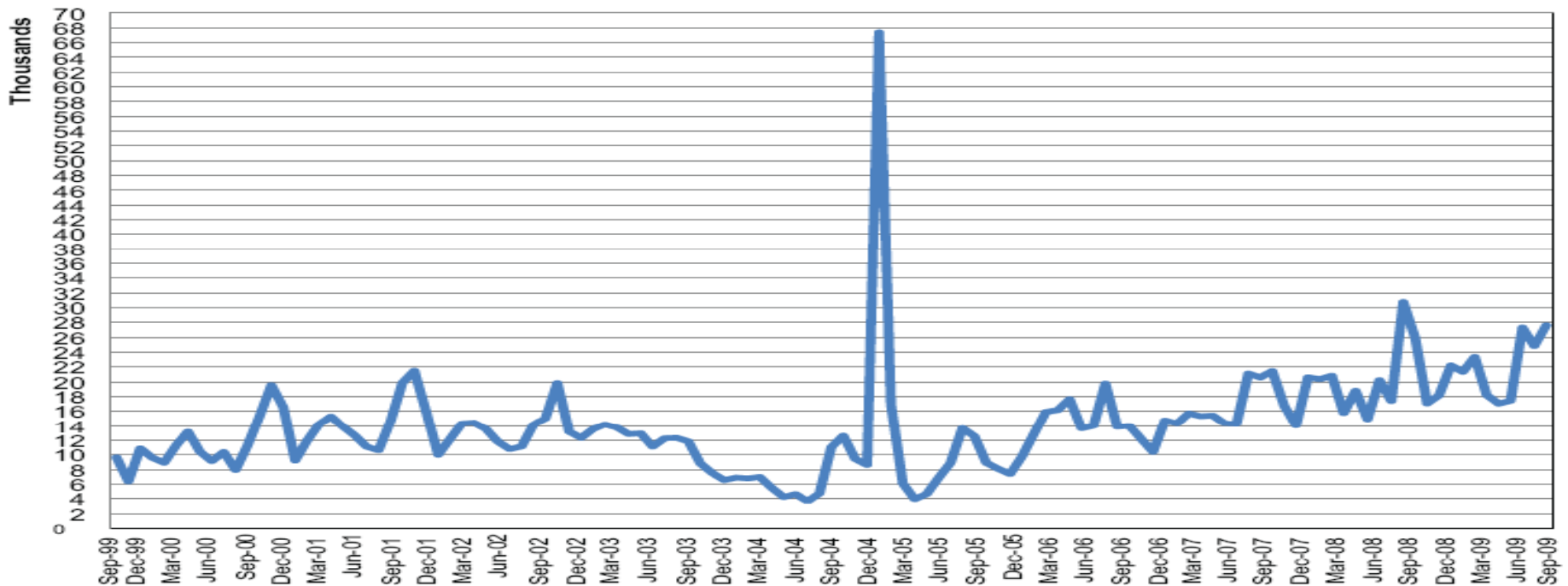
- Program components included
 - Medicaid MCO and PCCM
 - MediKids
 - Healthy Kids
 - Children's Medical Services Network - Title XXI

- Excluding full pay enrollees



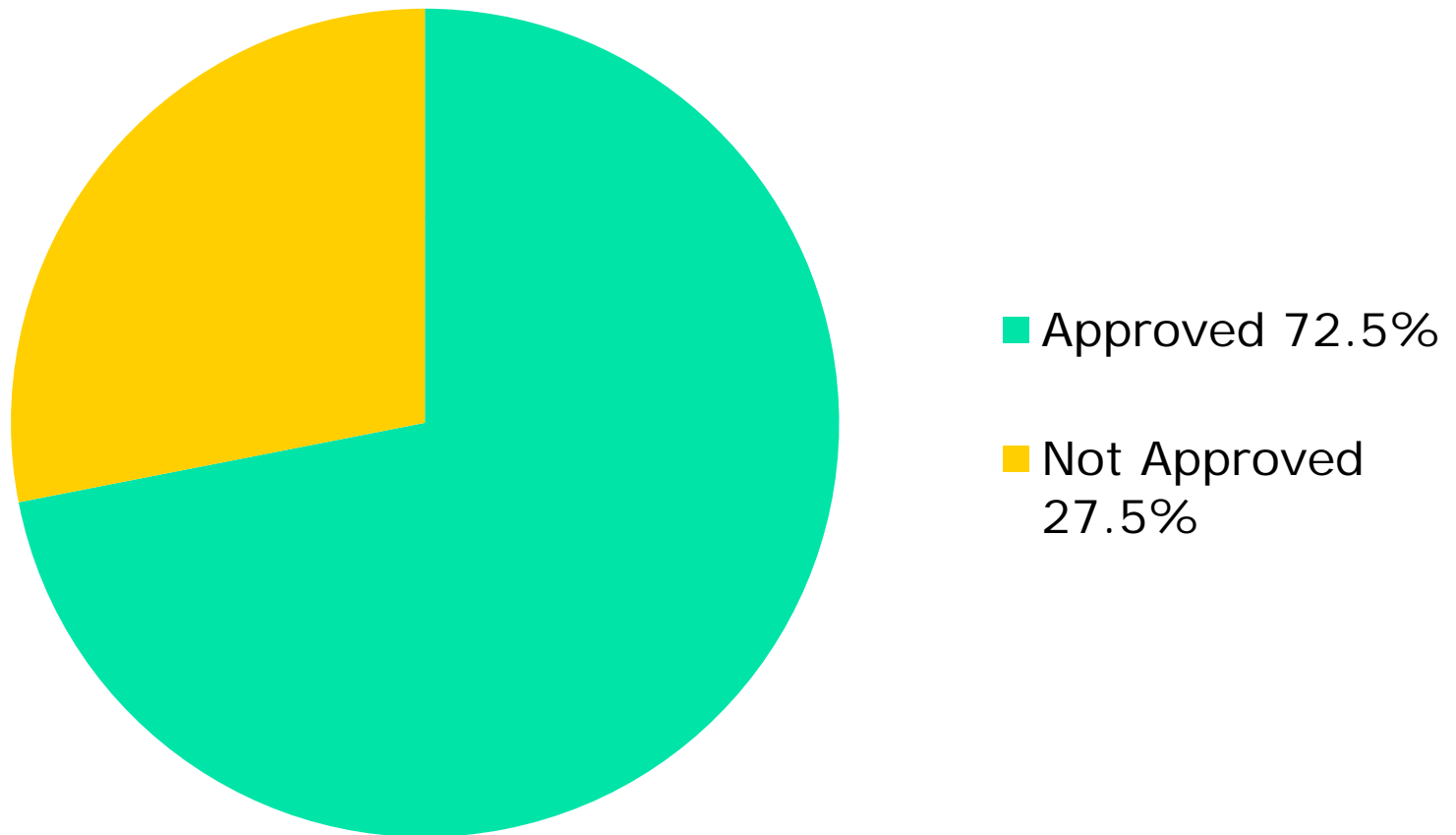
Applications received

- SFY 2008-2009 - averaged approximately 20,786 applications per month.
- Overall, applications were received from 249,426 families representing 387,008 children.





280,544 Children Approved for Coverage



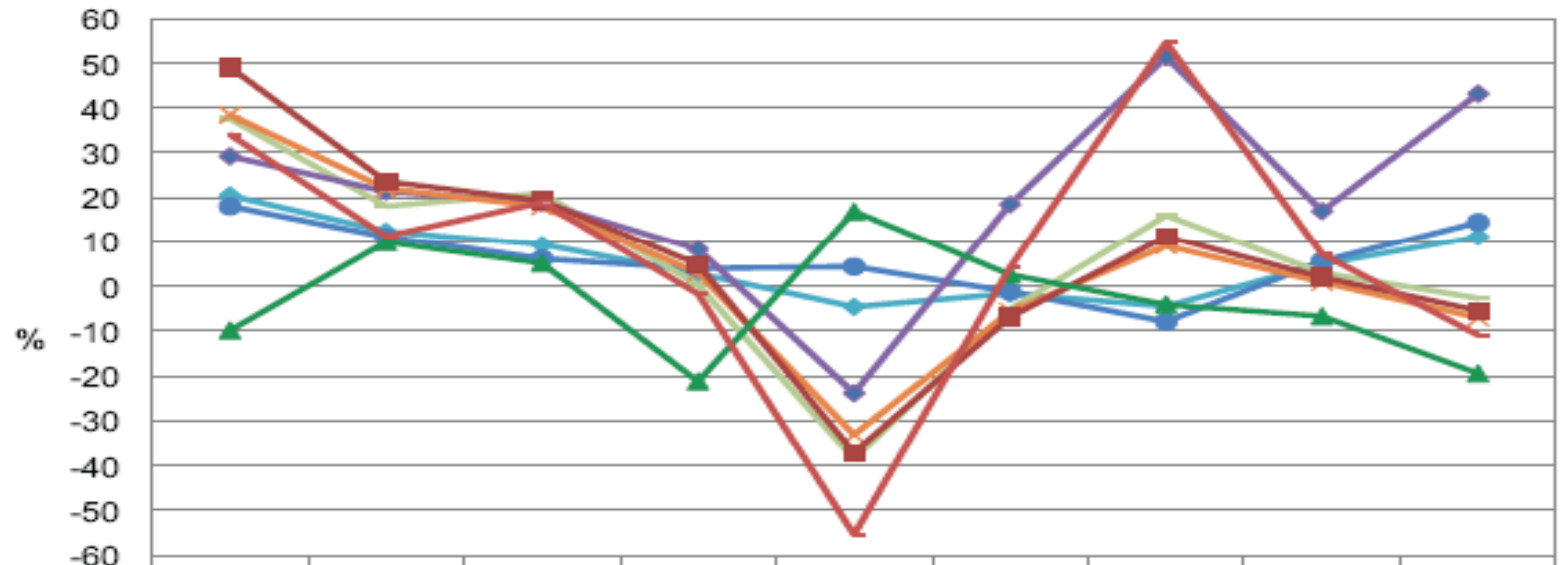


Enrollment trends

- Total KidCare enrollments increased by 11.2 percent from July 1, 2008 to June 30th 2009.
- As of June 30, 2009, 1,621,888 children were enrolled – an increase of 11.2 percent from the 1,458,980 children enrolled on June 30, 2008.
- While the Title XIX enrollments grew by 14.5 percent, Title XXI enrollments decreased 2.7 percent.



Percentage growth in KidCare for nine state fiscal years



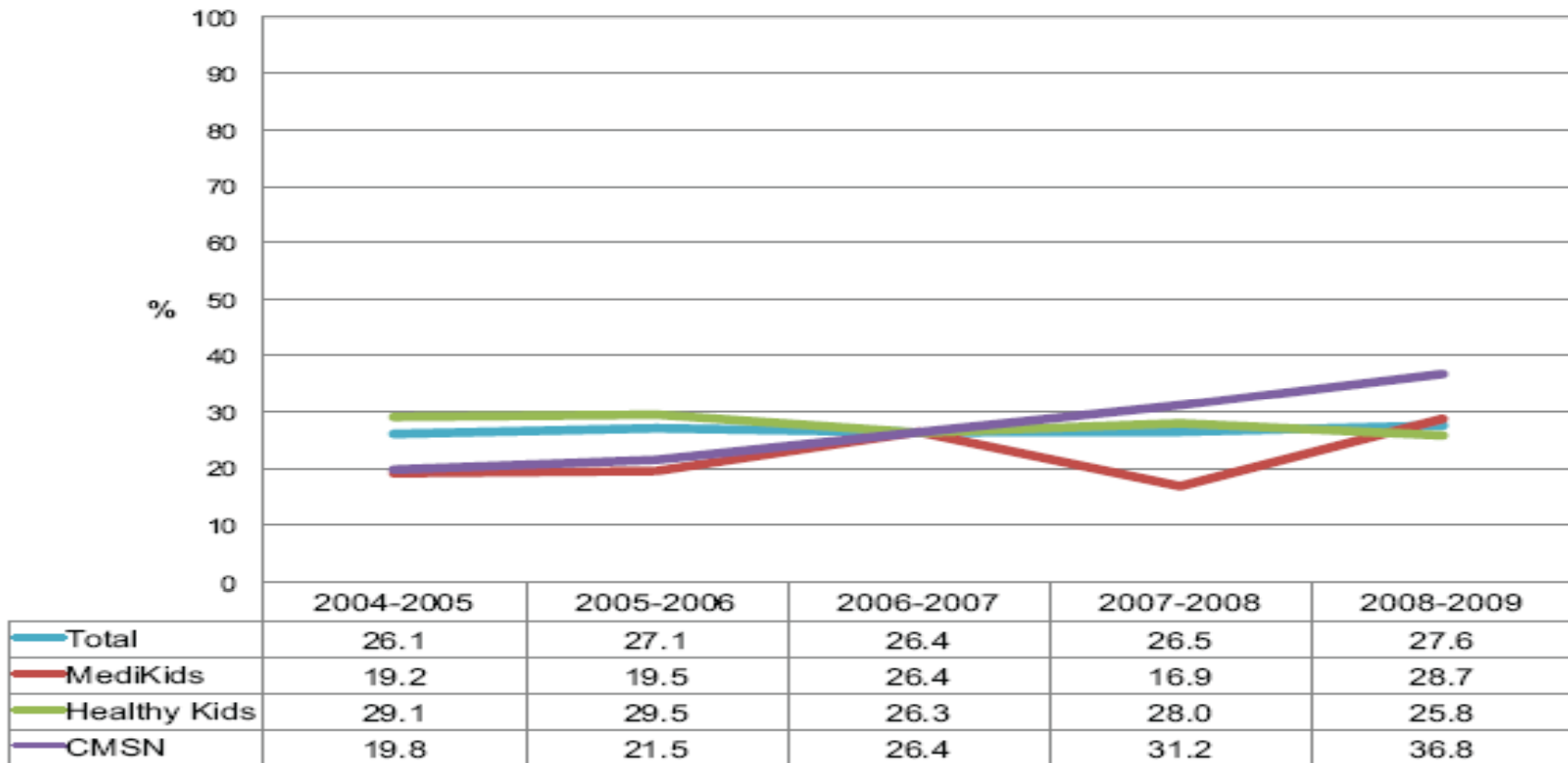
	7/2000-6/2001	7/2001-6/2002	7/2002-6/2003	7/2003-6/2004	7/2004-6/2005	7/2005-6/2006	7/2006-6/2007	7/2007-6/2008	7/2008-6/2009
— KidCare Total	20.5	12.4	9.4	2.8	-4.6	-1.6	-4.5	5.0	11.2
— Medicaid Title XIX	18.1	11.2	6.2	4.0	4.4	-1.2	-7.9	5.6	14.5
— Title XXI Total	37.6	18.1	21.0	0.3	-38.5	-5.1	16.0	3.0	-2.7
— CMSN Title XXI	29.2	21.4	18.8	8.3	-23.8	18.5	51.3	17.0	43.1
— Healthy Kids Total	38.5	22.0	18.0	3.0	-33.1	-5.7	9.1	0.9	-7.0
— Healthy Kids Title XXI	49.0	23.6	19.3	4.9	-37.1	-6.9	11.2	2.0	-5.4
— Healthy Kids Other	-9.9	9.9	5.1	-21.2	16.9	2.6	-4.1	-6.7	-19.4
— MediKids Total	34.1	11.3	18.9	-1.7	-55.4	4.2	54.6	7.2	-10.9

Family experience with application and enrollment

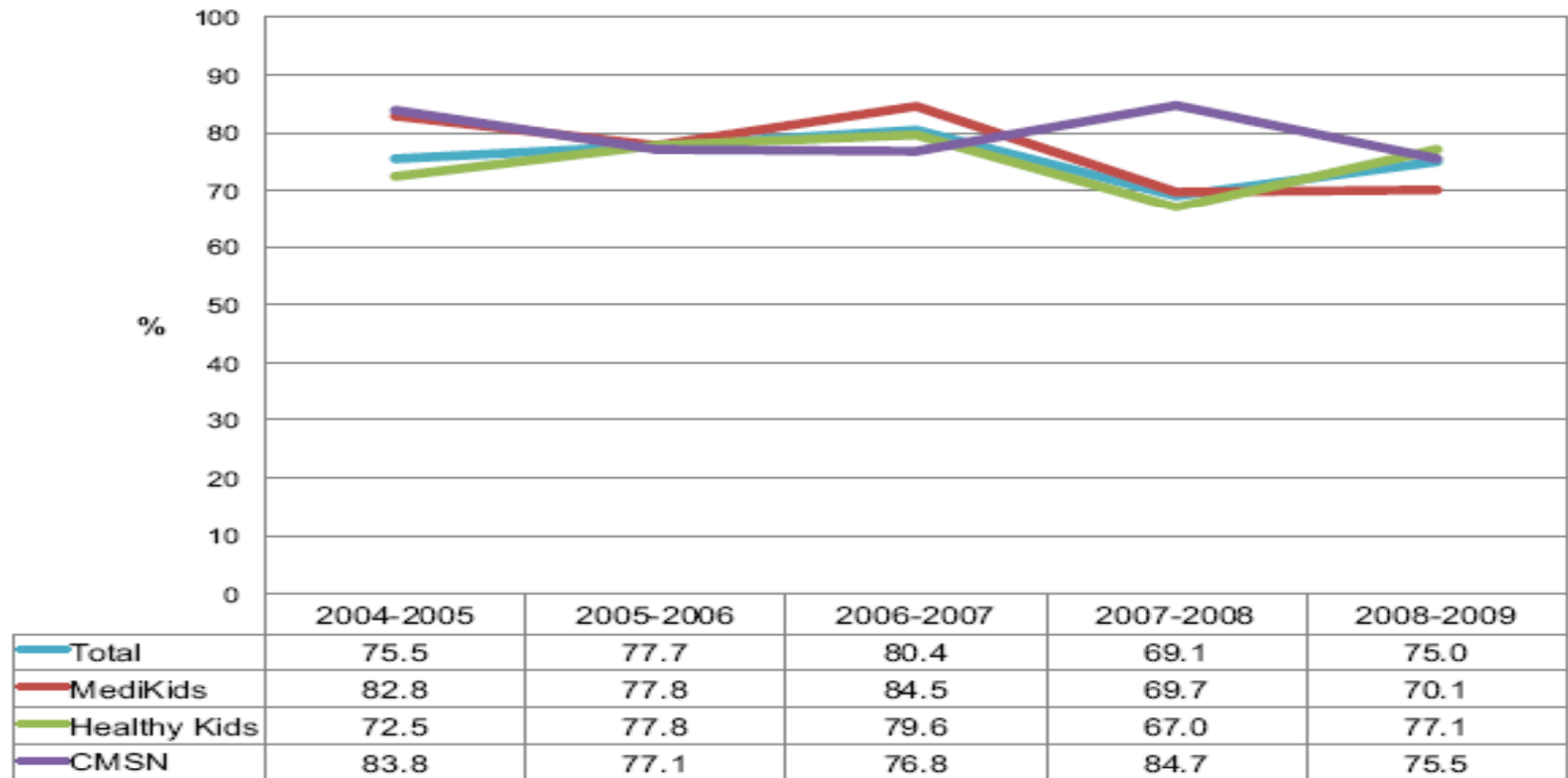
- 91% of families think the application forms are easy to understand
- 48% of families report receiving coverage within one month of their application. Another 25% report receiving coverage within two months.
- 87% of newly enrolled families think KidCare is run very well or well
- 93% of newly enrolled families think KidCare program staff are very helpful or helpful.



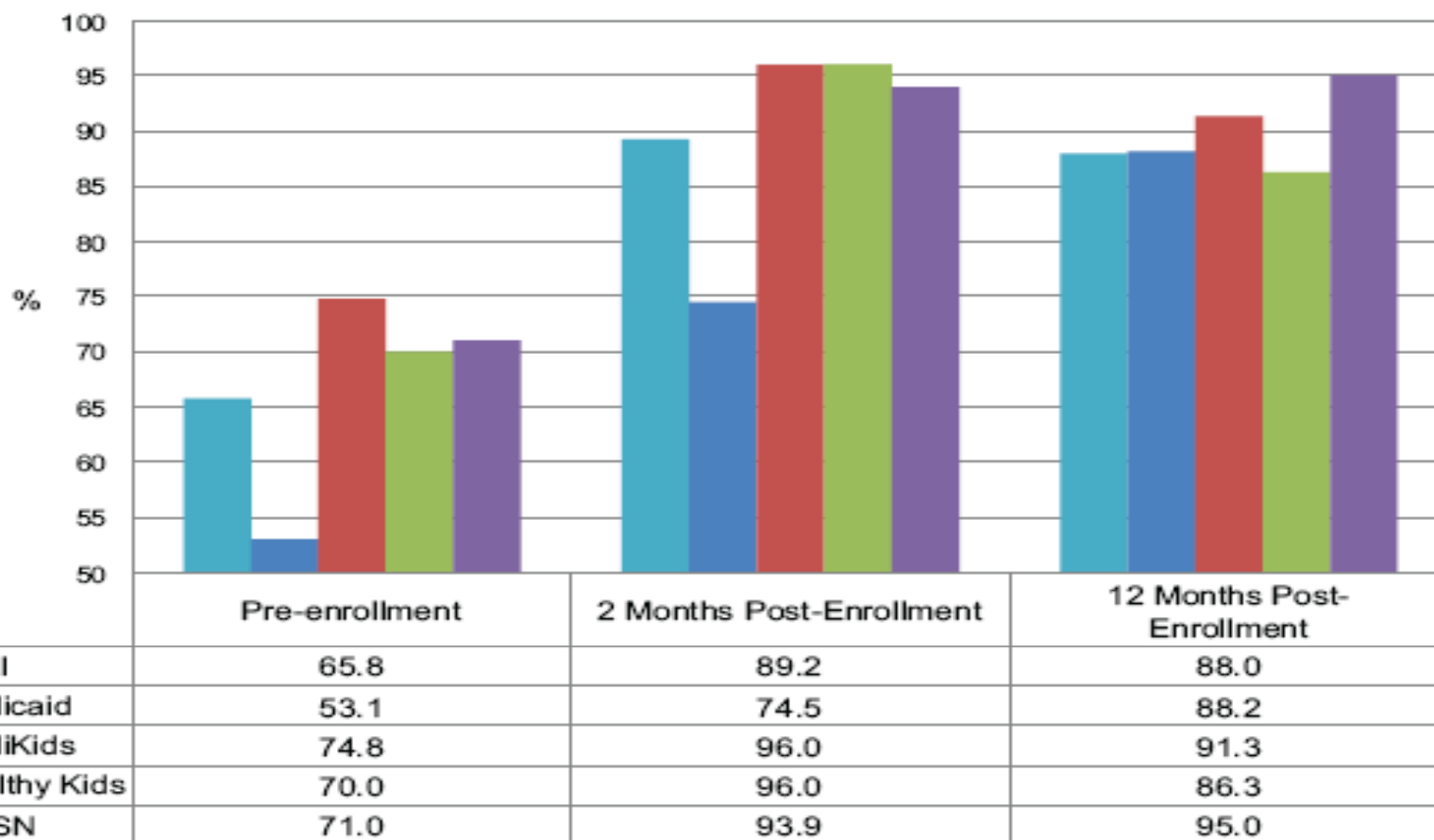
Newly enrolled families who have difficulty “almost every month” or “every couple of months” paying the KidCare premium.



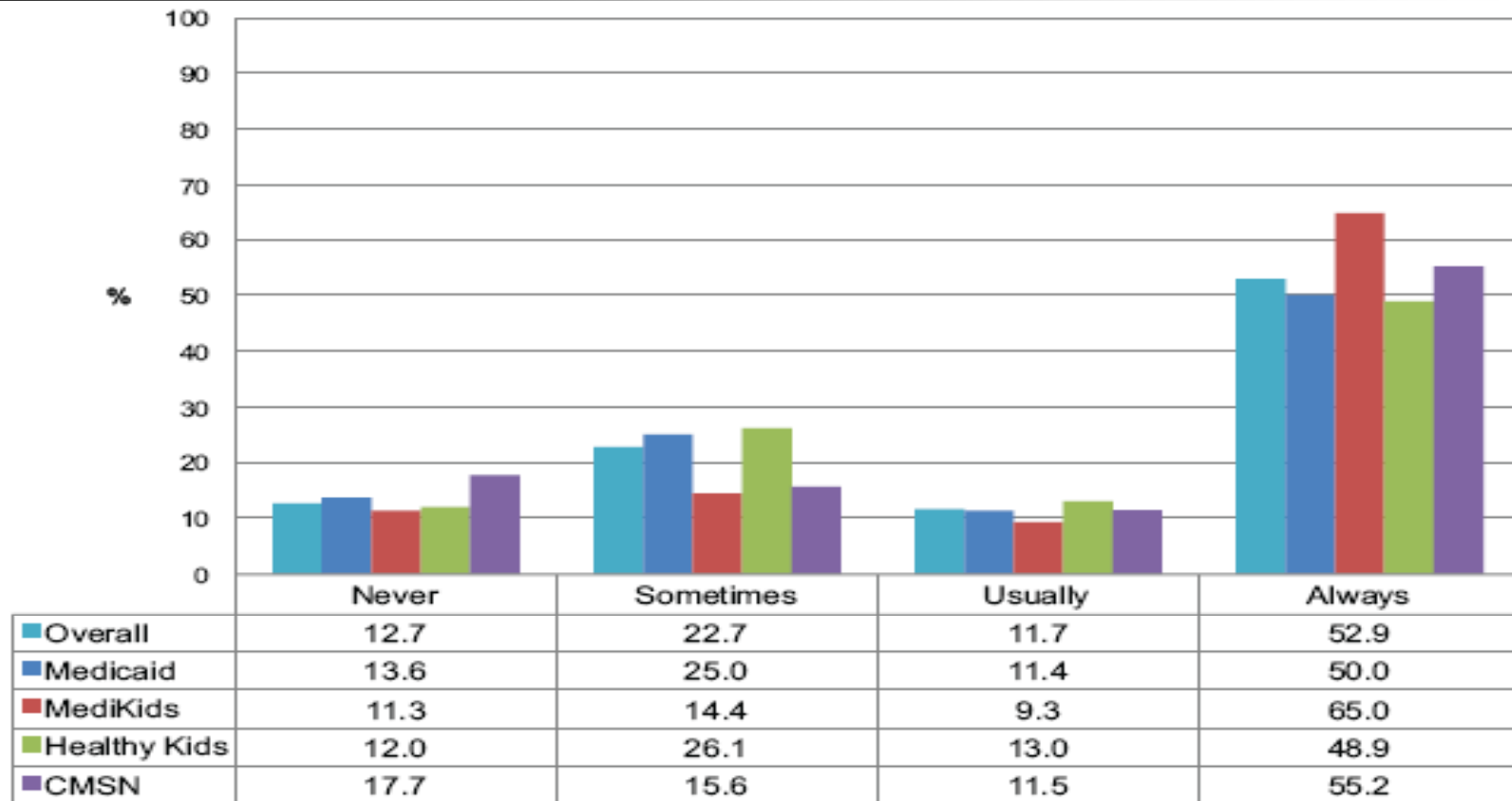
Newly enrolled families who strongly agree that paying a KidCare premium is “worth it”.



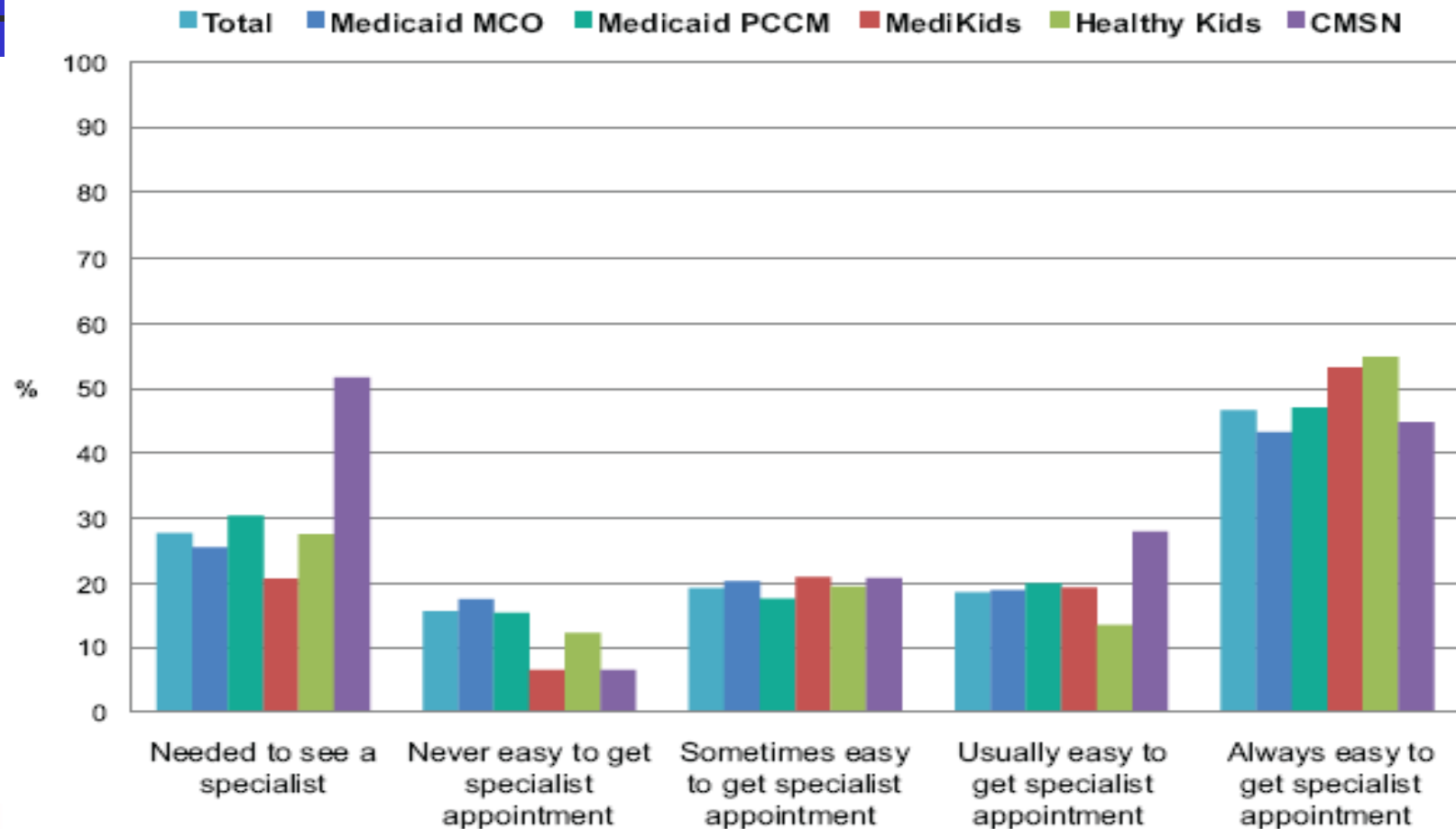
Having a Personal Provider by program (percentage of new enrollees pre and post enrollment and established enrollees)



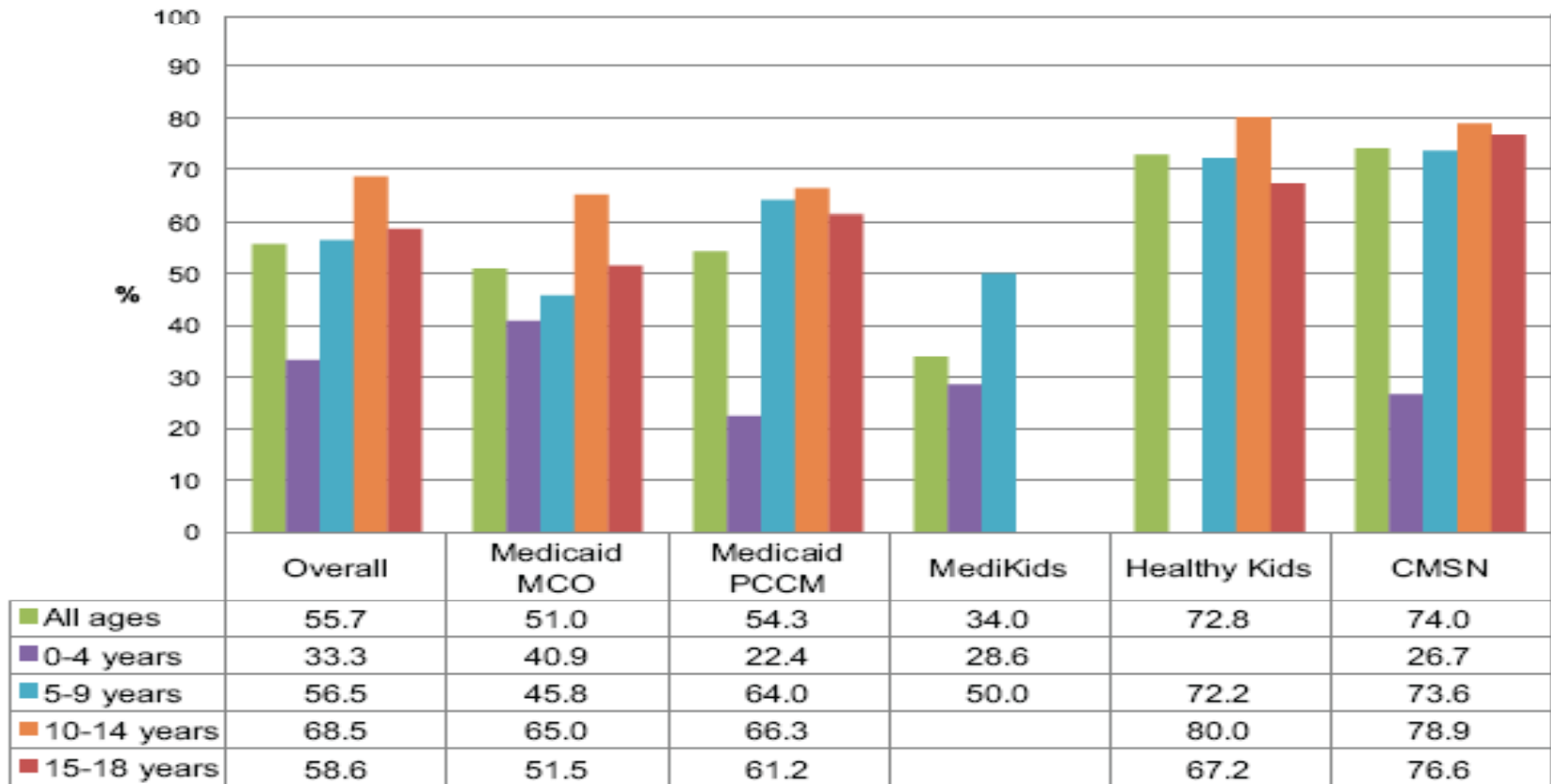
Ease of finding a PCP for new enrollees (2009)



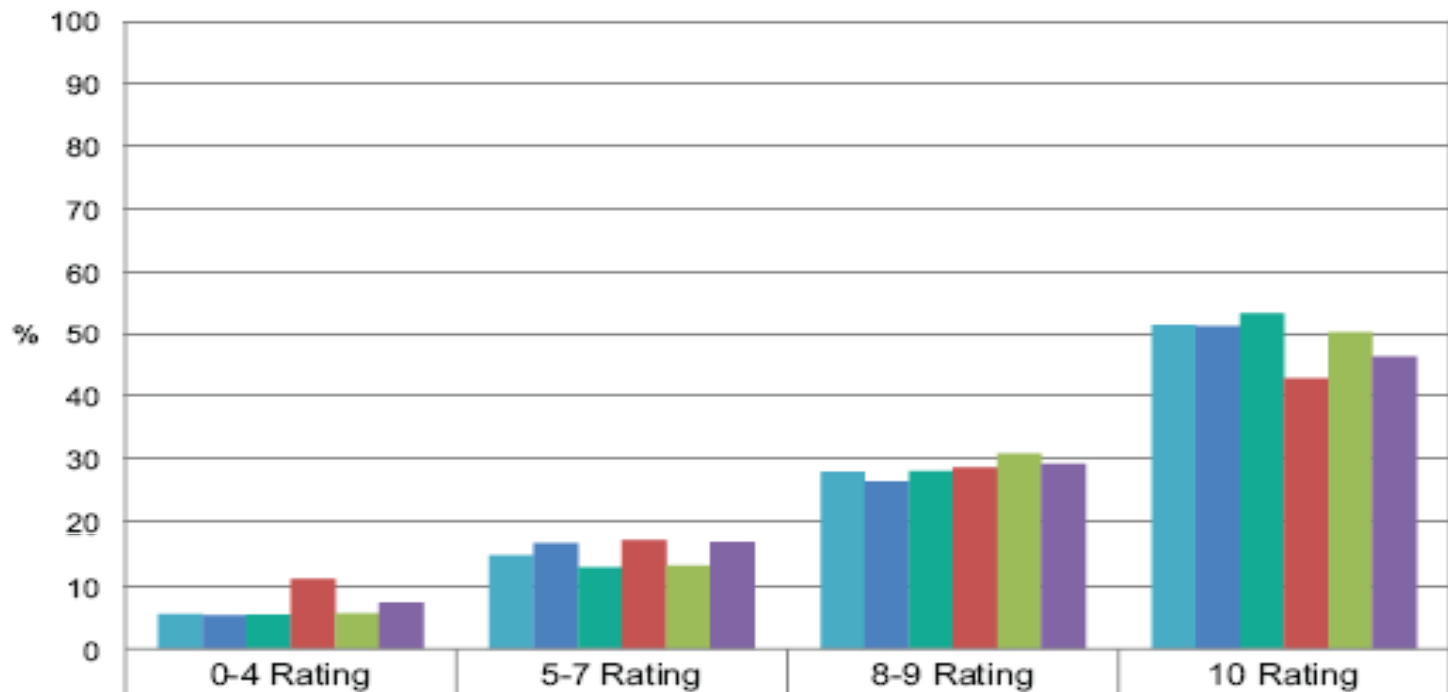
Access to Specialty Care (percentage of established enrollees)



Established enrollees seeing a dentist in the last 12 months, by age



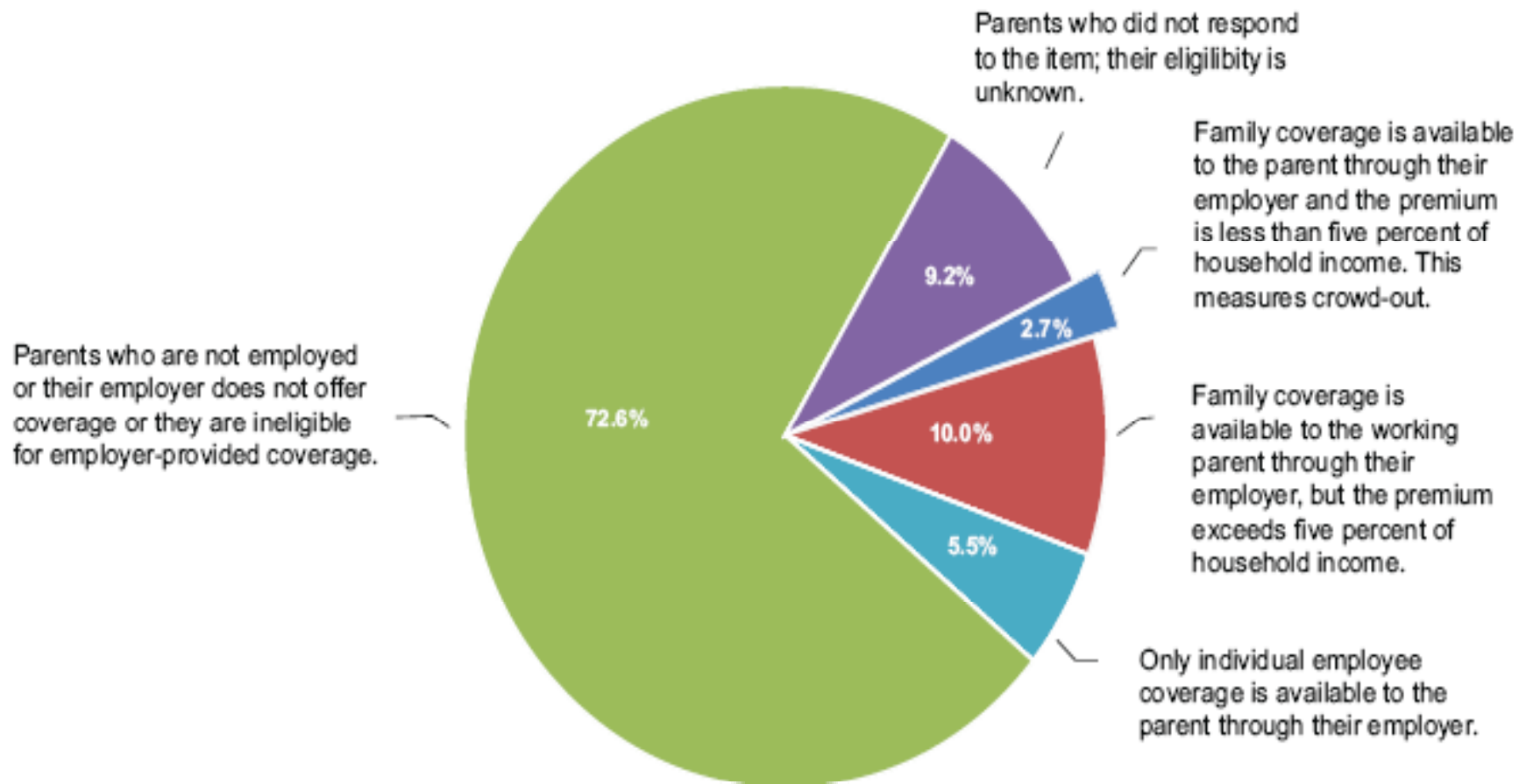
Ratings [zero(low) to ten(high)] of dental care for established enrollees



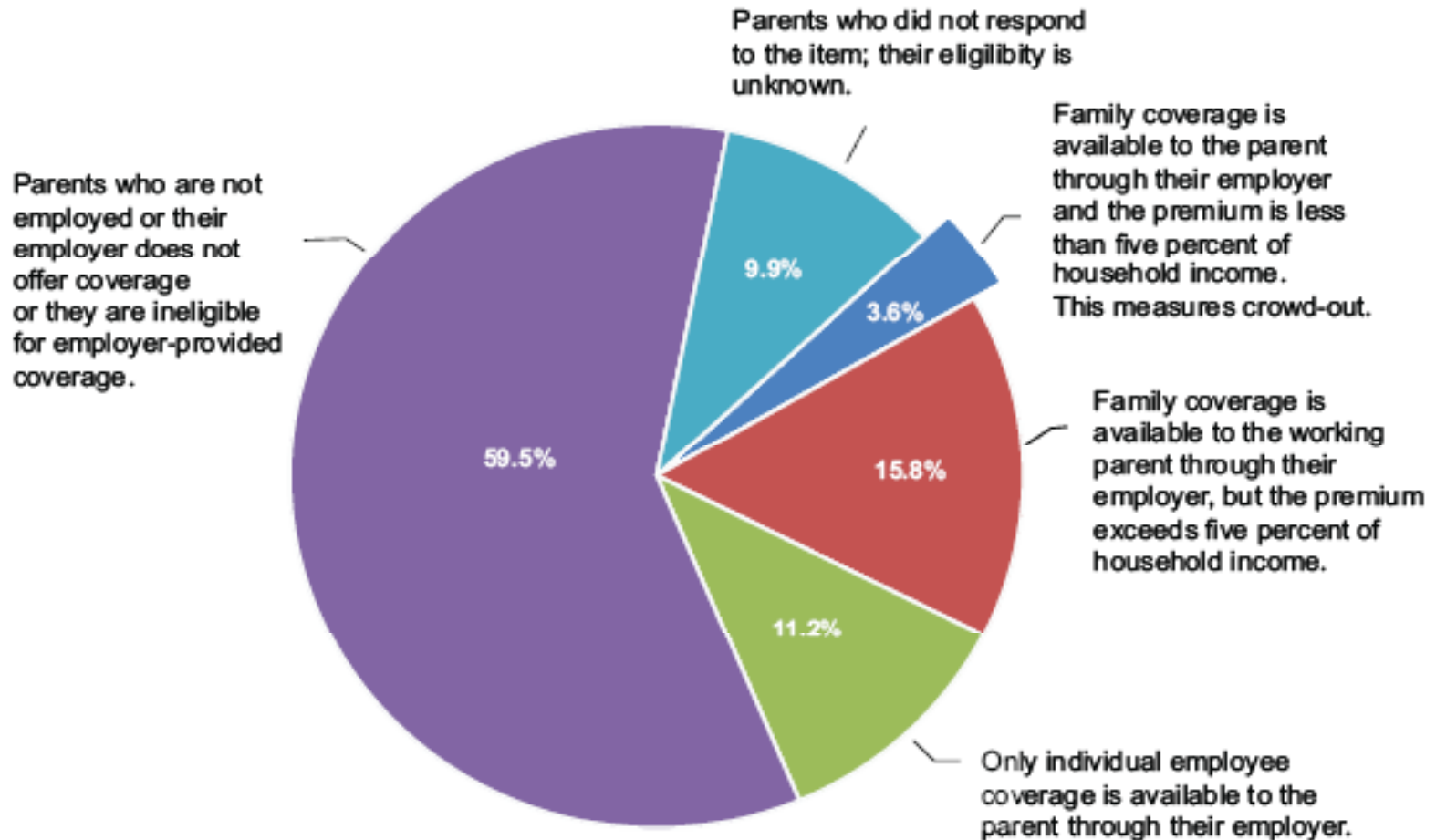
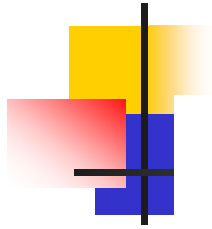
	0-4 Rating	5-7 Rating	8-9 Rating	10 Rating
Overall	5.6	14.9	27.9	51.6
Medicaid MCO	5.4	16.9	26.4	51.4
Medicaid PCCM	5.5	13.0	28.1	53.4
MediKids	11.2	17.4	28.6	42.9
Healthy Kids	5.7	13.3	30.8	50.2
CMSN	7.4	17.1	29.2	46.3



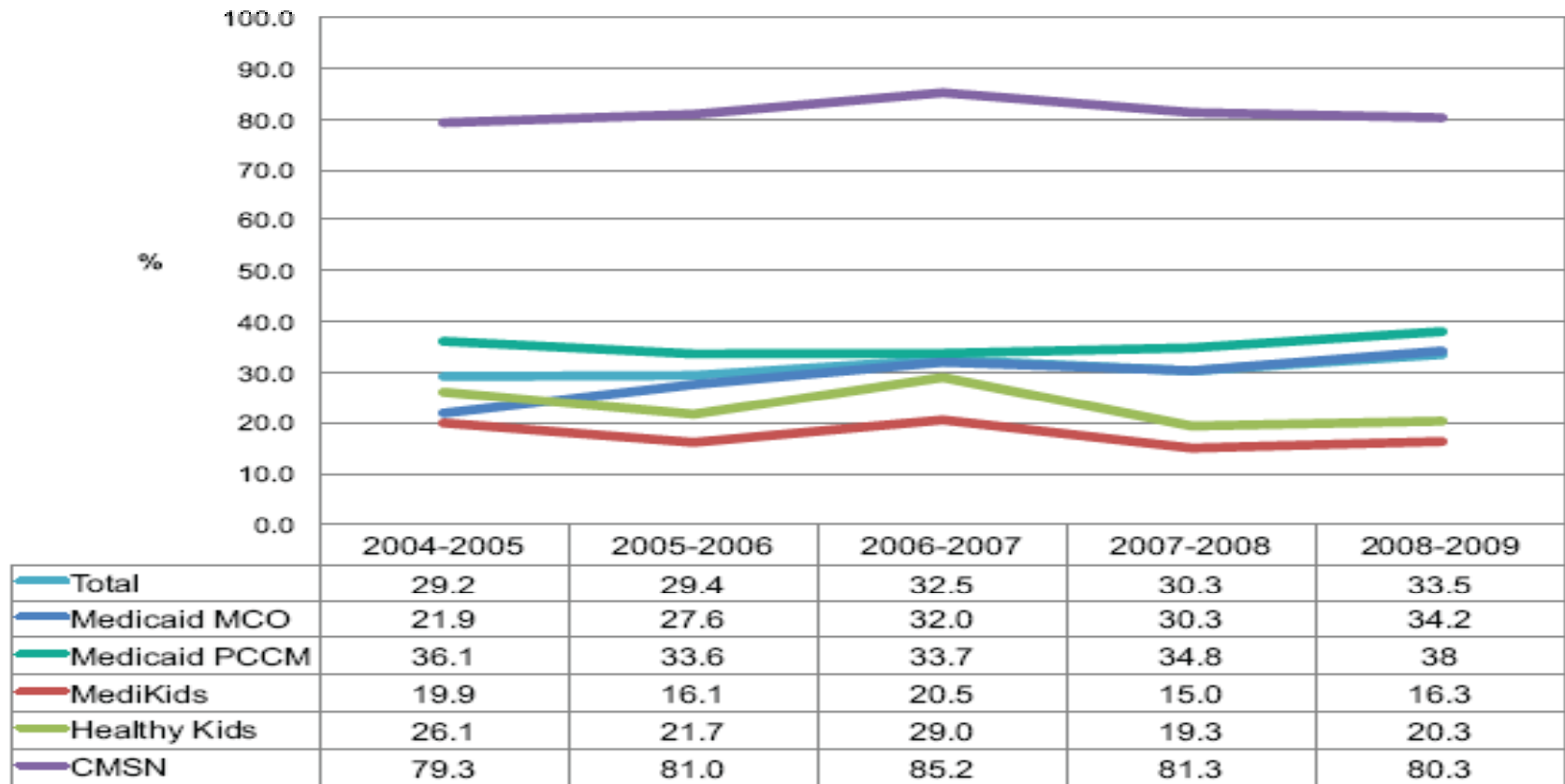
Current access to employer-provided insurance coverage among established enrollees



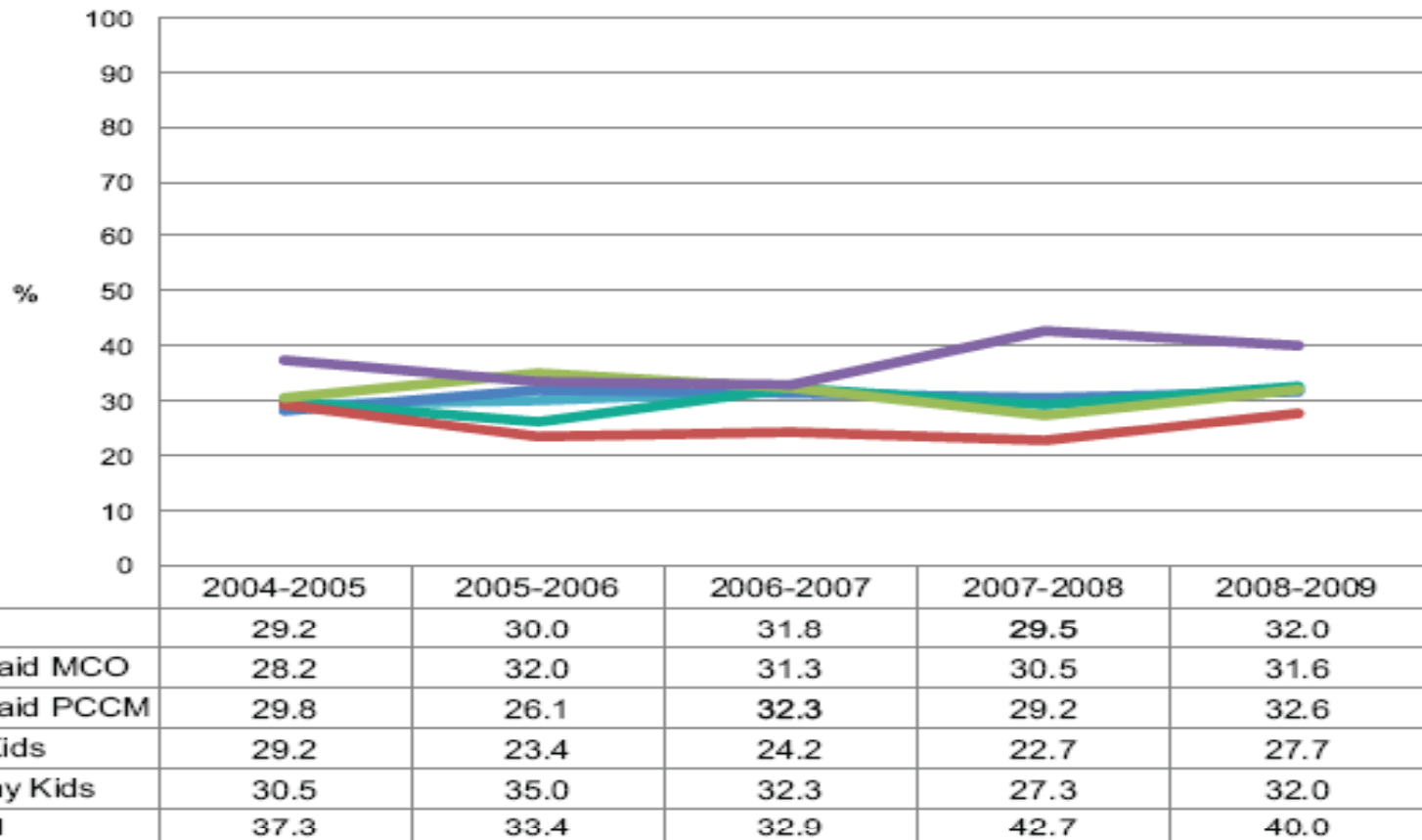
Access to employer-provided insurance coverage among new enrollees



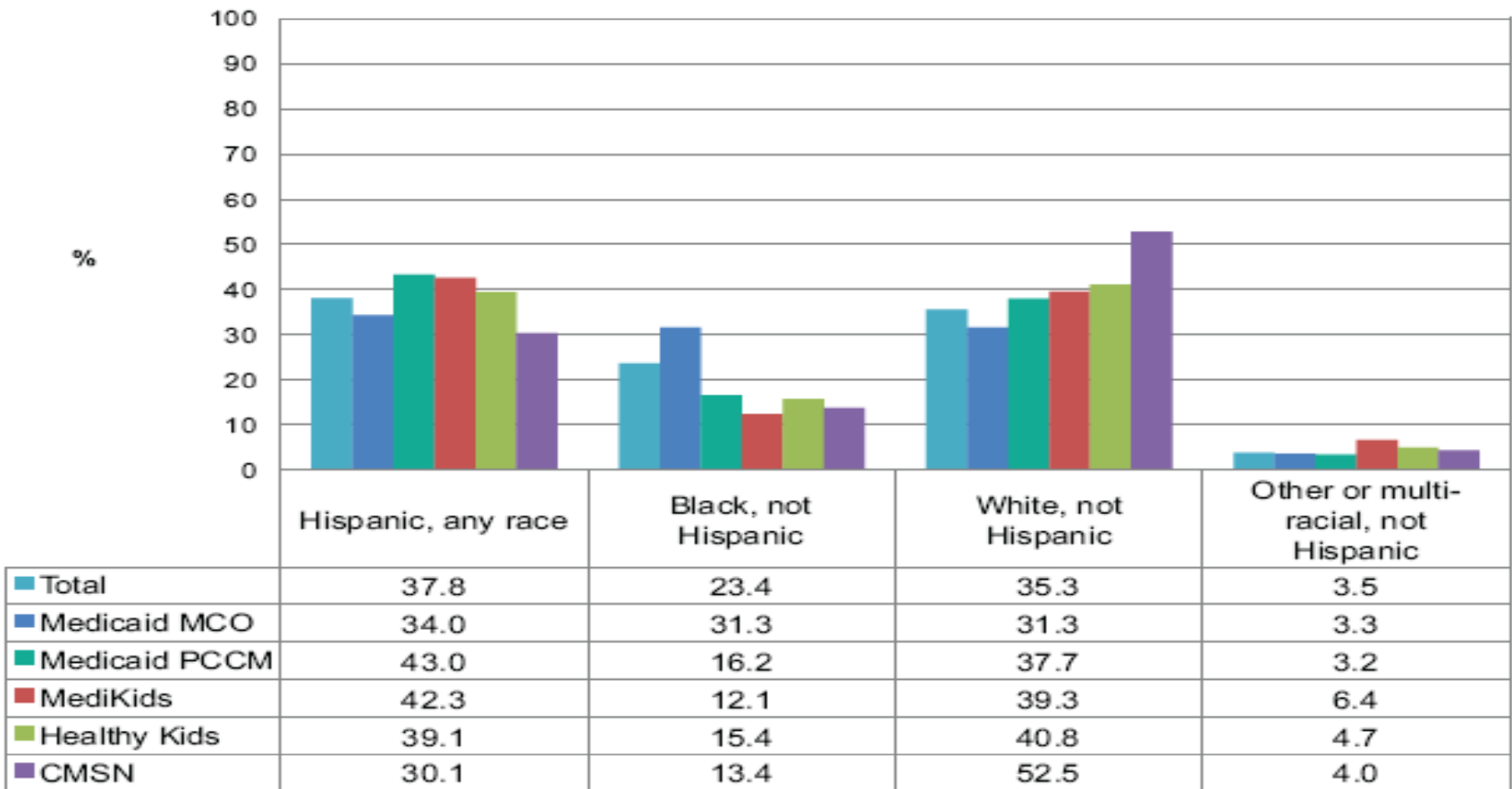
Established enrollees with Special Health Care Needs



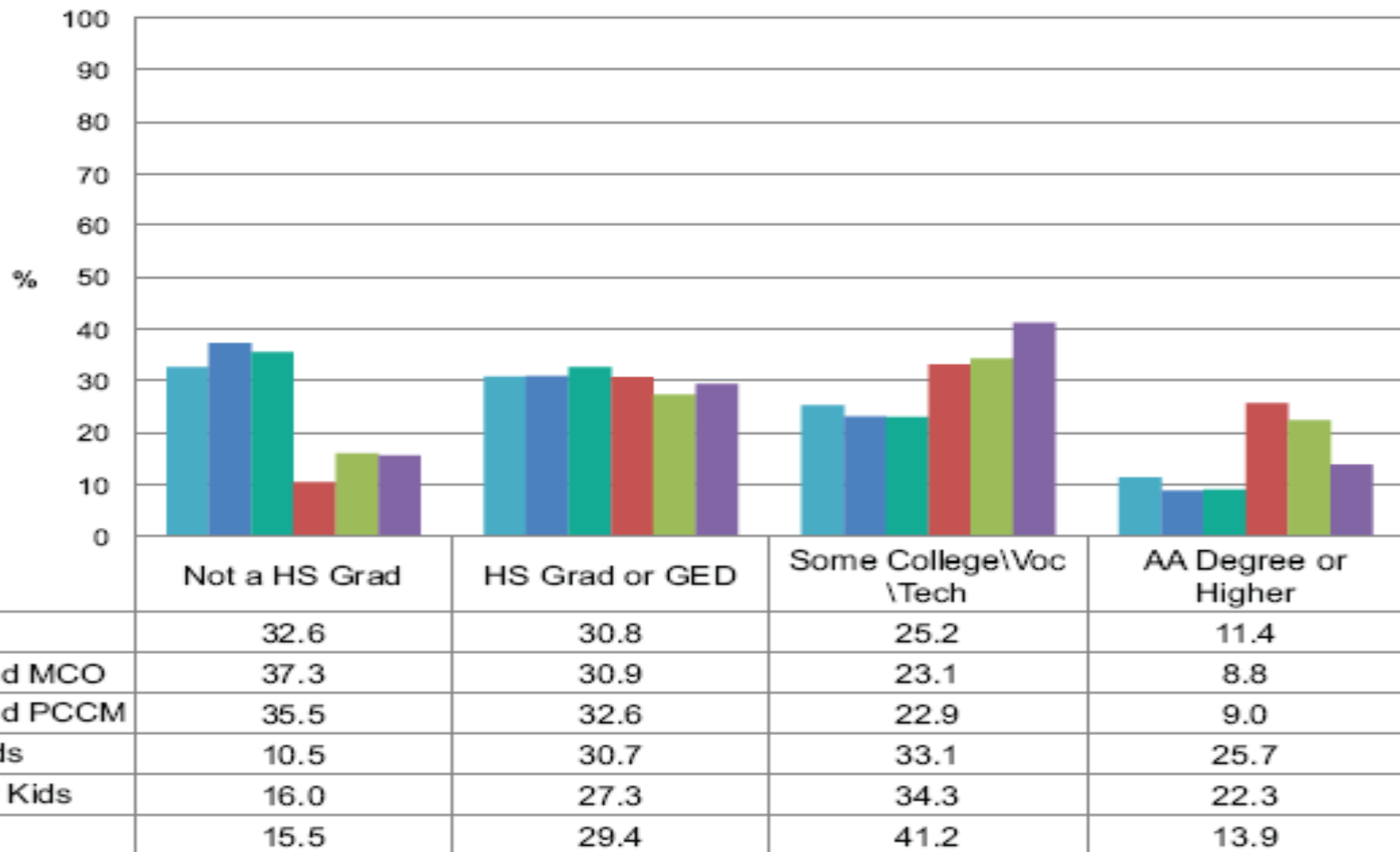
Body Mass Index among children 2-18 years (percentage of established enrollees)



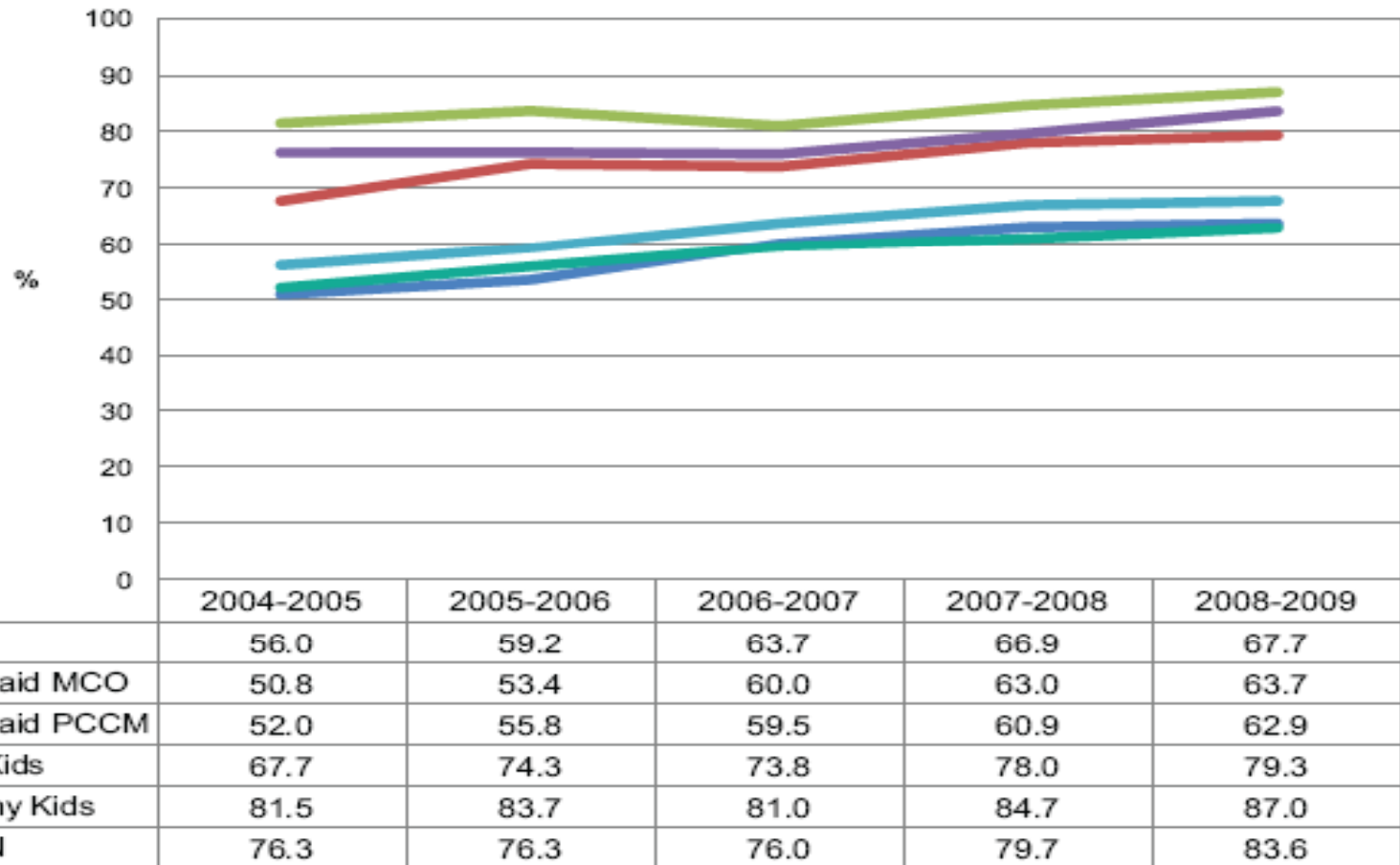
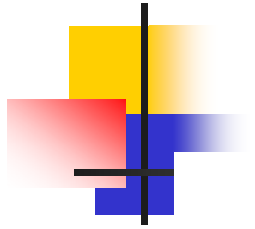
Race and ethnicity of established enrollees



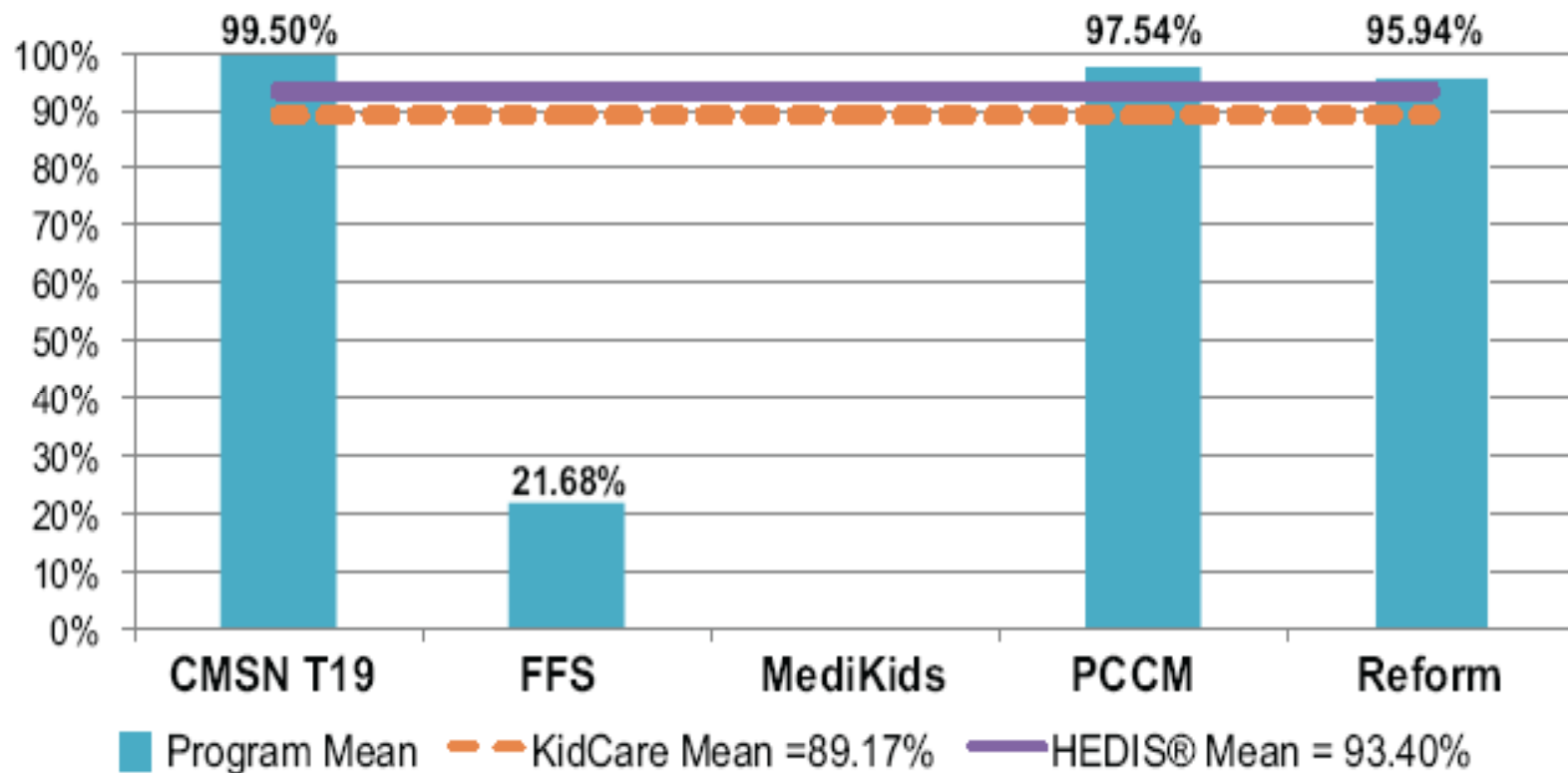
Education levels for parents of established enrollees



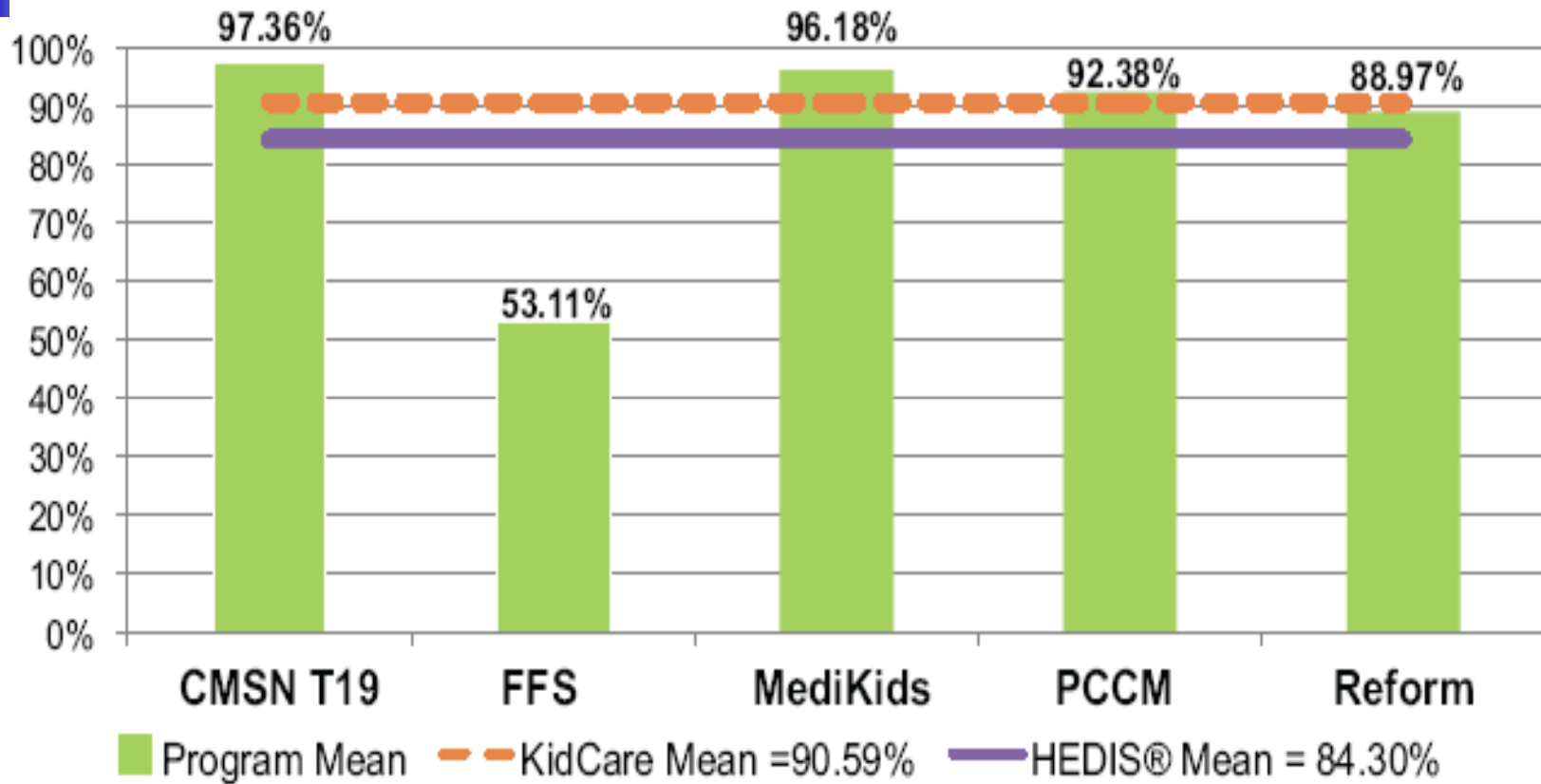
KidCare families with a computer and internet access at home



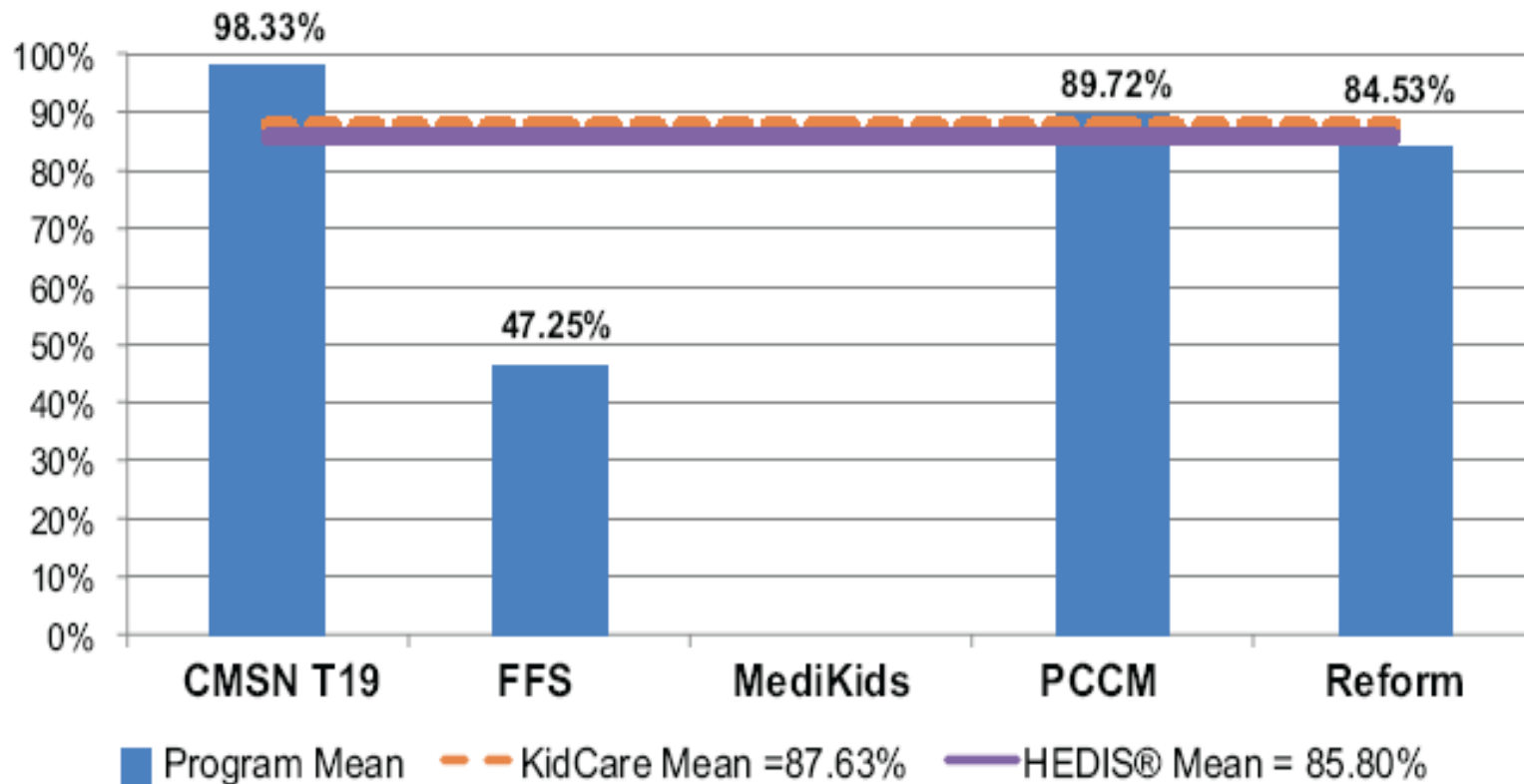
HEDIS children's access to Primary Care Practitioners, ages 12-24 months (2008)



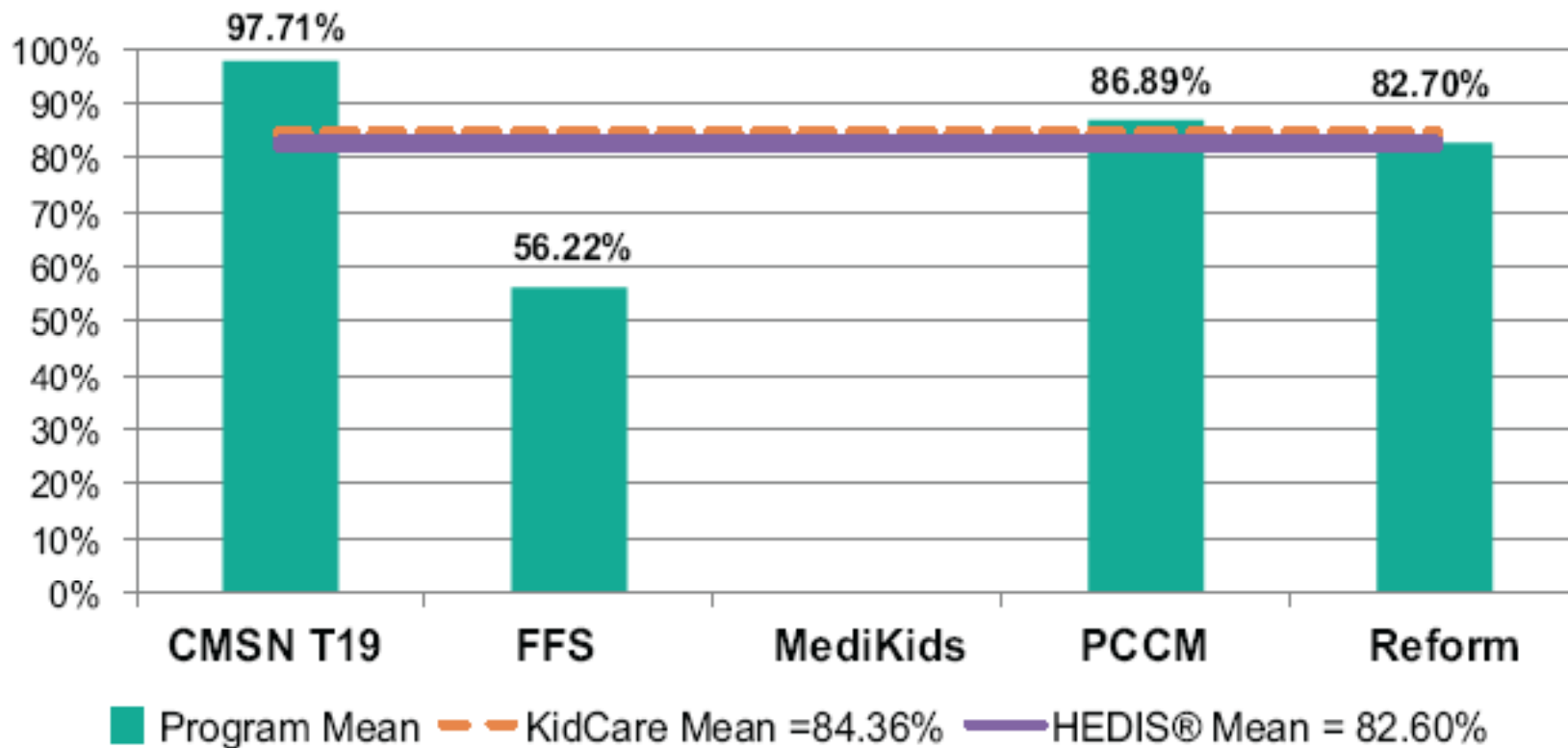
HEDIS children's access to Primary Care Practitioners, ages 2-6 years (2008)



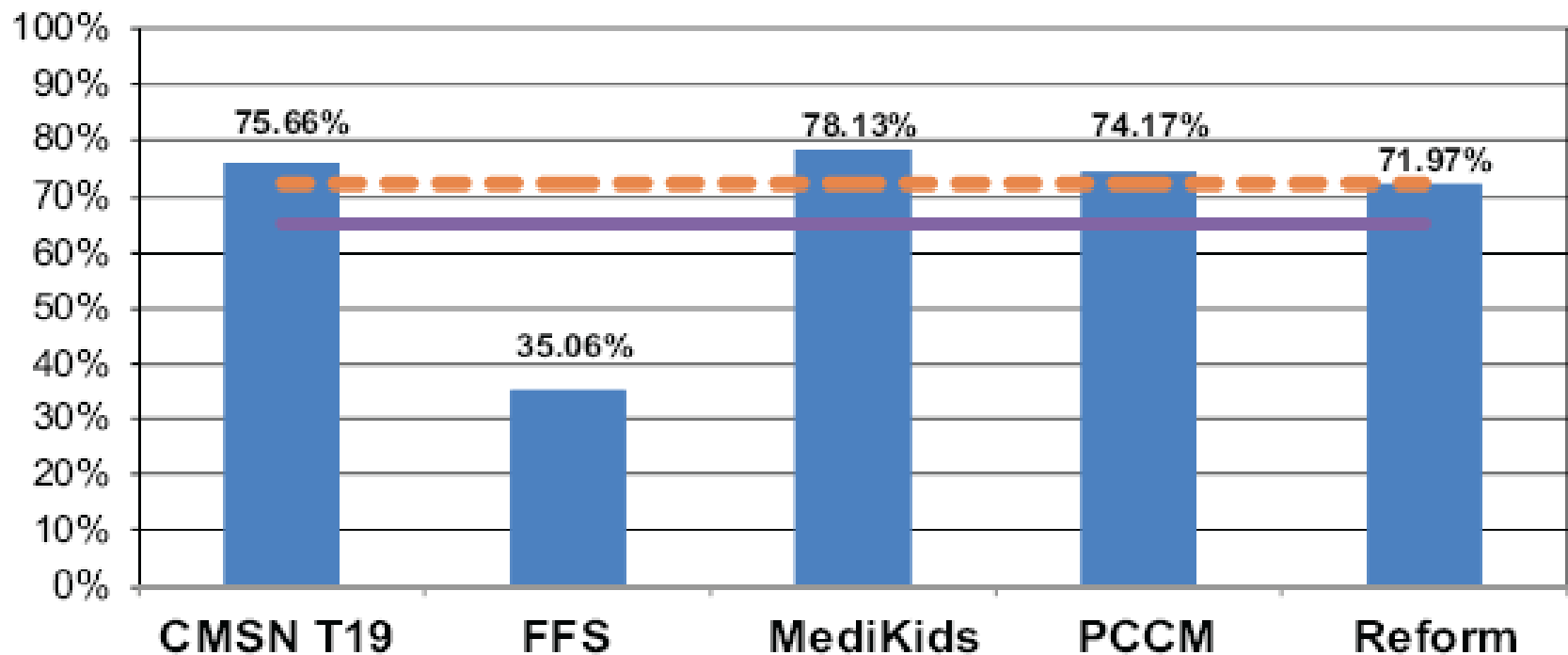
HEDIS children's access to Primary Care Practitioners, ages 7-11 years (2008)



HEDIS children's access to Primary Care Practitioners, ages 12-18 years (2008)



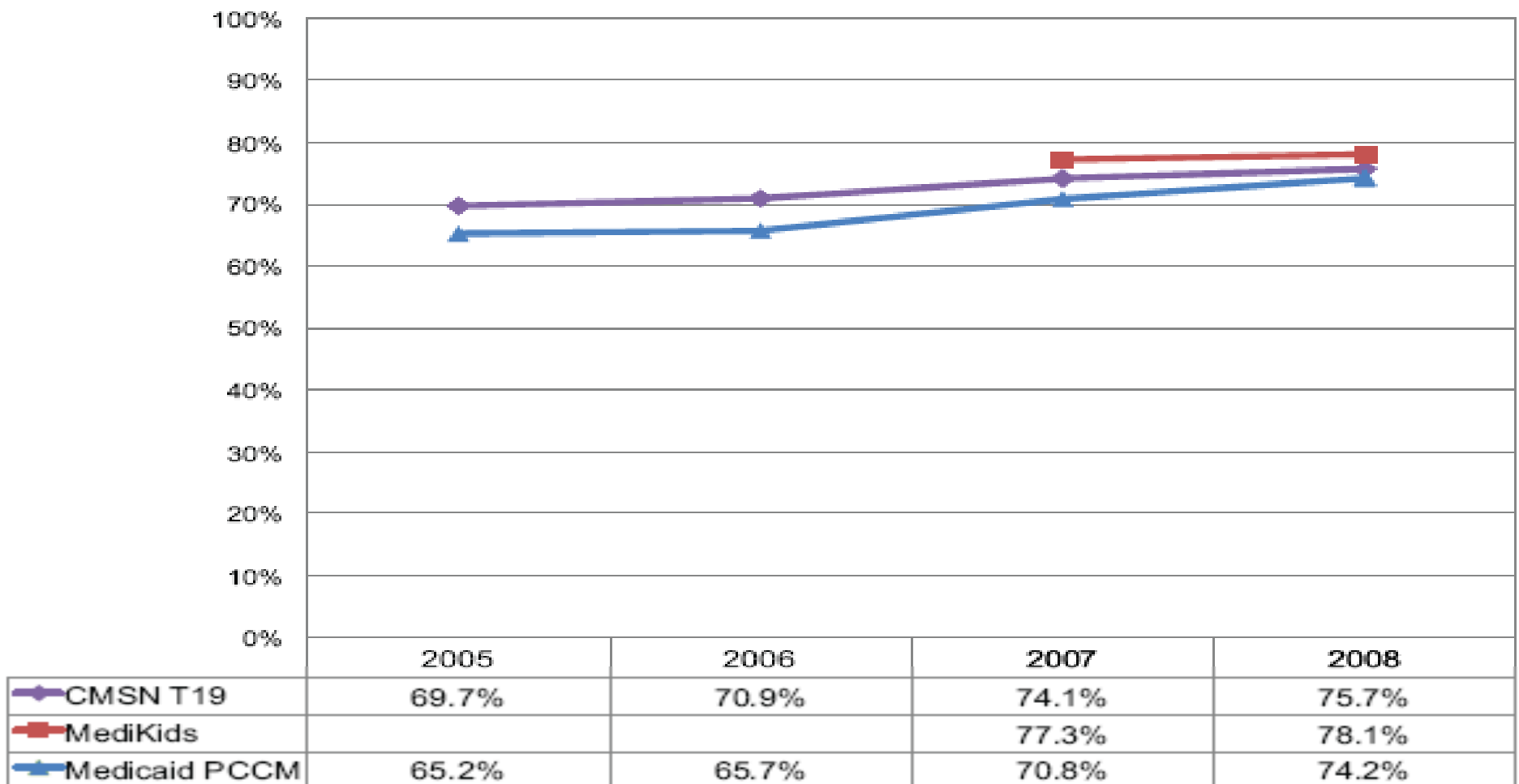
HEDIS Well-child visits in the 3rd, 4th, 5th, and 6th years (2008)



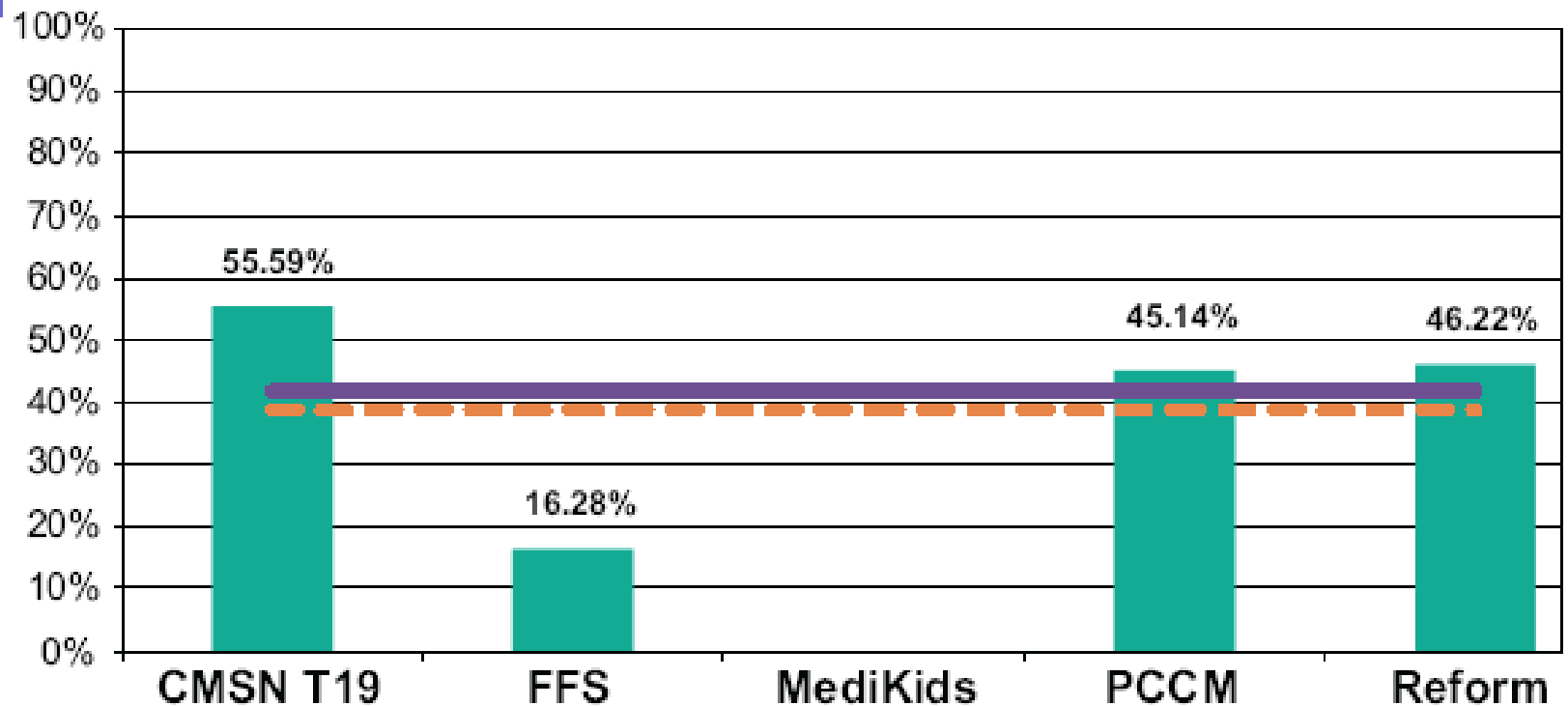
■ Program Mean - - - KidCare Mean = 72.23% — HEDIS® Mean = 65.30%



HEDIS Well-child visits in the 3rd, 4th, 5th, and 6th years



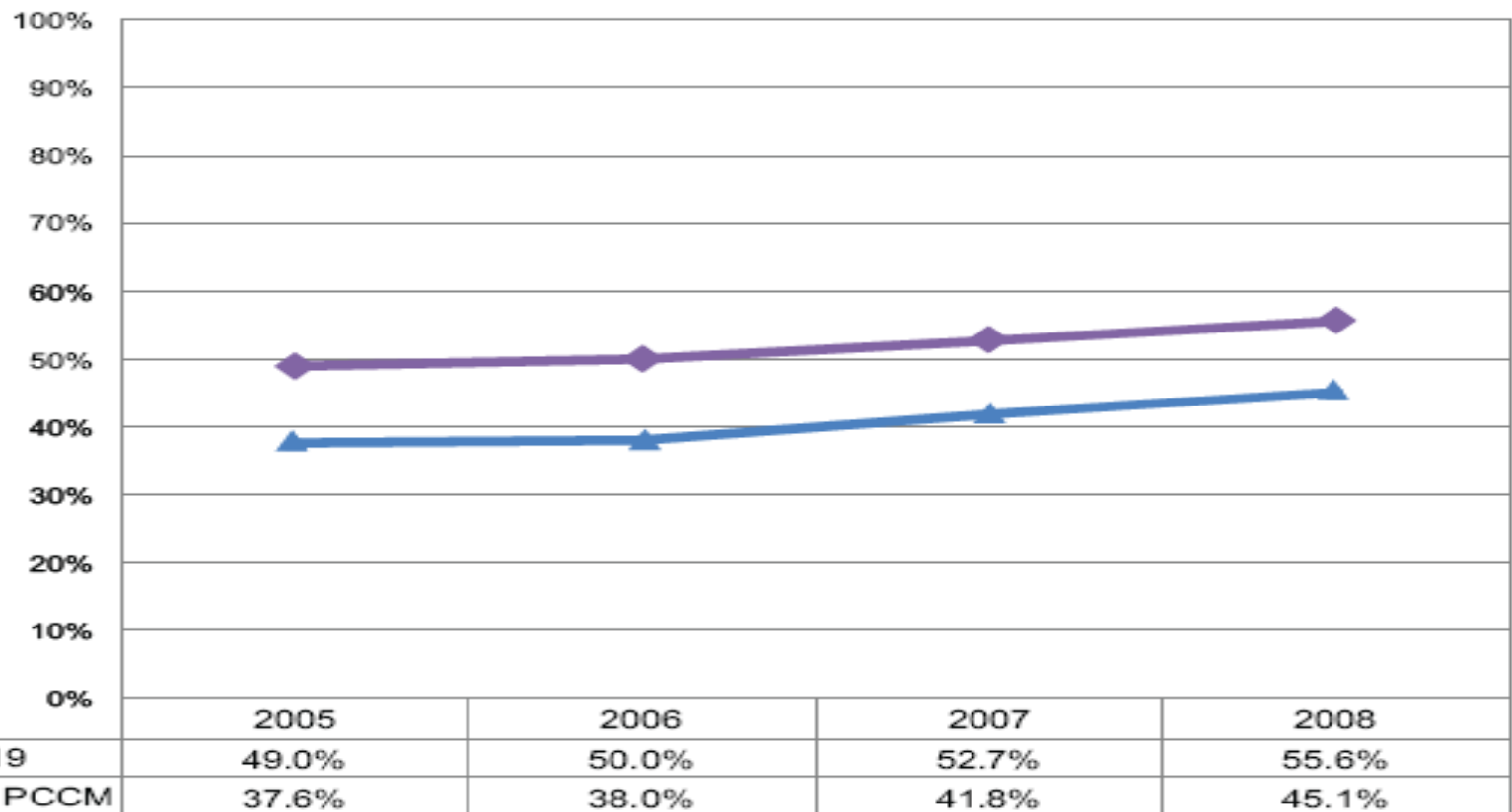
HEDIS Well-care visits for adolescents (2008)



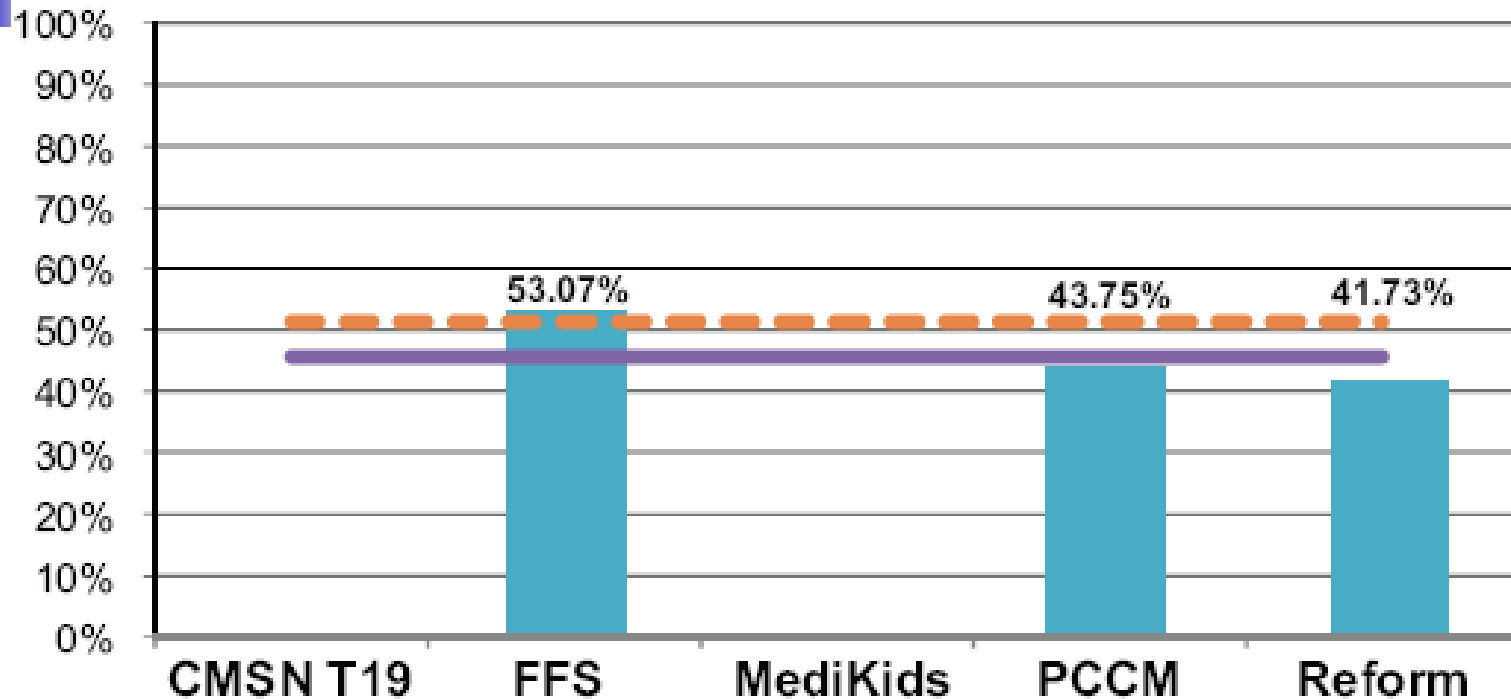
■ Program Mean - - - KidCare Mean = 38.72% — HEDIS® Mean = 42.00%



HEDIS Well-care visits for adolescents



HEDIS Initiation of alcohol and other drug dependence treatment



■ Program Mean - - - KidCare Mean = 51.26% — HEDIS® Mean = 45.60%





Recommendations

1. KidCare should continue to work closely with ICHP analysts to identify HEDIS quality of care indicators that can be specifically addressed for improvement by policy or programmatic interventions.
2. AHCA should continue to work to collect and consolidate encounter files from the Medicaid MCOs.





This year's plans

- Expand Medicaid survey analysis to 9 regions
- Include Medicaid MCOs in the Quality of Care analysis
- Reduce overlap with survey work being conducted by Healthy Kids





This year's plans

- Expanded HEDIS reporting to include:
 - Asthma medication compliance
 - Maintenance of ADHD treatment
 - Maintenance of treatment for depression
 - Pediatric Quality Indicators (potentially avoidable hospitalizations)
 - HEDIS ambulatory Care Measures (Includes ED use)





This year's plans

- Focus Studies Under Consideration
 - Expansion of ED use study
 - What is considered ED use?
 - How reliable is parent report?
 - How does this related to “comprehensiveness” of the medical home?
 - The patient centered medical home is receiving great attention
 - policy implications related to medical home requirements
 - Impact of policy changes on 30 day waiting period and access to coverage
 - Families who complete and do not complete enrollment process
 - Examine transitions from Title XXI to Medicaid

